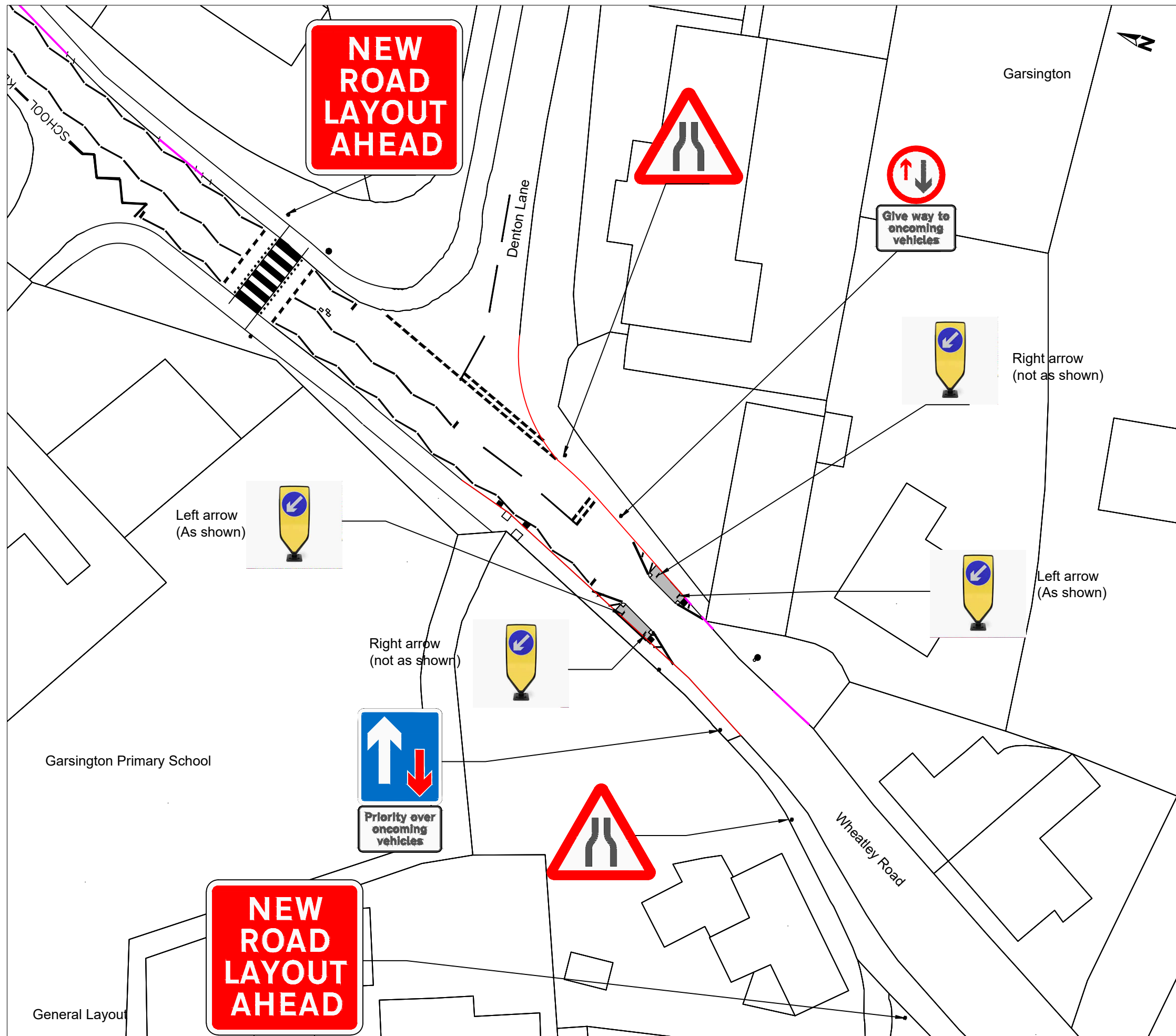


C:\Users\ralph.green\OneDrive - Oxfordshire County Council\Schemes\145 Garsington- Various\Pinch Point 2\Wheatley Road Pinch Point No.2 Rev1.dwg



Drawing No. Revision

**SAFETY, HEALTH AND ENVIRONMENTAL INFORMATION**

IN ADDITION TO THE HAZARDS/RISKS NORMALLY ASSOCIATED WITH THE TYPES OF WORK DETAILED ON THIS DRAWING, NOTE THE FOLLOWING SIGNIFICANT RESIDUAL RISKS

CONSTRUCTION
MAINTENANCE/CLEANING
DECOMMISSIONING/DEMOLITION

© Crown Copyright and Database rights 10023343 2017

Rev.	Date	Purpose of revision	Drawn	Checked	Approved



Owen Jenkins  
 Director for  
 Infrastructure Delivery  
 Communities  
 Oxfordshire County Council  
 County Hall  
 New Road  
 Oxford  
 OX1 1ND  
 Tel: 0845 310 1111

Project title  
**Garsington  
 Wheatley Road Improvements**

Drawing title  
**Proposed Pinch Point  
 No.2  
 General Layout**

Drawing Status Information

Scale @ A3	Drawn by RGr	Checked by	Approved by
	Date drawn	Date checked	Date approved

Oxfordshire Project No. & File Ref

Drawing No. Revision